

Poison Ivy & Tick Smart

Remember! Stick to the path

Identifying Poison Ivy



Leaves of three,
let it be!

Tick Smart



Check for ticks!
Remove if bit.

Seek medical attention if embedded.

What to Wear

- Long sleeves
- Long pants
- Hiking shoes

Directions to CERA

1. Start at Admin Circle adjacent to Administration Drive Garage
2. Follow the sidewalk parallel to the garage
3. Cross the road at the crosswalk
4. Turn right and continue down the sidewalk until you see the sign "Herbert Run Greenway"
5. Follow bridge into Research Park
6. Walk through the research park and cross Research Park Drive
7. Walk toward Herbert Run Greenway signage and enter the pathway into the woods
8. Follow the path into CERA! Follow the yellow blazes on trees to stay on the Herbert Run Greenway
9. When you reach the path with white blazes you have reached the CERA trail

Scan the QR code to
find out more about
the CERA trail.



THIS BROCHURE WAS CREATED BY

DEMETRIUS MCGUFFIN
SAFIATOU COULIBALY
HANNA TRAN

CERA

interactive
TRAIL GUIDE



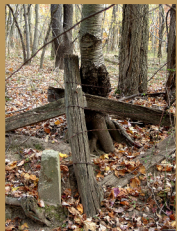
YOUR ON-CAMPUS ESCAPE
POINT²POINT

**CONSERVATION AND ENVIRONMENTAL RESEARCH
AREAS**

Interactive Points

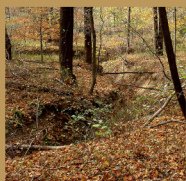
To enhance your CERA experience:

- Follow the trail blazes on the trees to stay on the CERA loop.
- Follow the trail markers with more information about each interactive point.



- 10. Young Forest**
- 11. Historic Boundary**
- 12. Nontidal Wetland**
- 13. Sandy Soil**

This section of the trail is in the younger part of the forest. You can see signs from when the land was farmed.

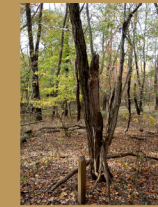


- 7. Stream Erosion**
- 8. Herbert Run**
- 9. Scenic Overlook**

Along interactive points discover the captivating landscape of a spring-fed stream and a scenic overlook of the forest structure. Beware of erosion along the stream.



Hiking Time: ~75 Minutes



- 1. Two Forest Ages**
- 2. Poison Ivy**
- 3. Dead Wood & Snags**

Traveling through these interactive points, notice the old and young forests. Watch out for lurking poison ivy along the trail.



- 4. Forest Structure**
- 5. Invasive English Ivy**
- 6. Tulip Poplars**

Forest structure includes many different layers. Look for low growing plants, invasive vines, and quick growing trees along this stretch of the trail.

LAND ACKNOWLEDGMENT

UMBC was established upon the land of the Piscataway and Susquehannock peoples. Over time, citizens of many more Indigenous nations have come to reside in this region. We humbly offer our respect to all past, present, and future Indigenous people connected to this place.